



LAKE FOREST ELEMENTARY PTC

2024-2025 PROJECTED

MANAGEMENT & GENERAL EXPENSES

\$8,181

- MANAGEMENT COSTS - \$3000 (WEBSITE, SUPPLIES, TAX EXPENSE, SOFTWARE)
- PRINTING (FLYERS/BANNERS) - \$2,400
- INSURANCE - \$1,681
- ACCOUNTING - \$800
- ADMIN - \$300

PROGRAMS & SERVICES

\$19,480

- BEAUTIFICATION - \$10,000
- TEACHER APPRECIATION - \$3,400
- FIFTH GRADE GRADUATION - \$3,000
- ASSEMBLIES - \$2,500
(SCIENCE/A TOUCH OF UNDERSTANDING/
INTERNATIONAL WOMEN'S DAY/VETERAN'S DAY)
- DONATION TO PROJECT GREEN - \$2,000
(LAKE FOREST GARDEN)
- FIRST DAY OF SCHOOL - \$580

STUDENT SERVICES & ACTIVITIES

\$67,805

- ART/MATH/READING SPECIALISTS - \$36,000
(MATH AND READING SPECIALISTS ASSIST IN SMALL GROUP LEARNING)
- TEACHER CLASSROOM SUPPLY STIPENDS - \$13,750
- FIELD TRIPS - \$7,500
- FREE SCHOOL WIDE EVENTS - \$4,575
- SCHOLASTIC NEWS - \$2,310
- YEARBOOK - \$1,500
- SCHOLARSHIPS - \$1,370
- ROOM PARENT SUPPORT - \$800
(CONTRIBUTION TO CLASSROOM PARTIES IF NEEDED)

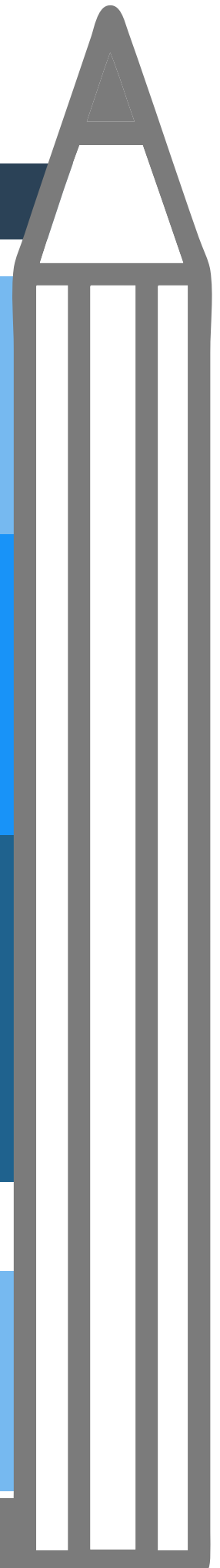
TOTAL OPERATING EXPENSES

FOR 2024/2025 \$95,467

-Looking ahead to the 25/26 school year-

The first fundraiser will be the Gala in November 2025. Events that will need to be funded before then include: Back to School, Grandparents Ice Cream Social, Fall Festival, Movie Night, and some gala expenses. In order to start the next school year off strong, our goal is to raise an additional \$20,000 this school year so we can continue our beginning of the year fun!

Thank you to all our Laker families who donate their time & resources to our programs. Your support makes this all possible.





LAKE FOREST ELEMENTARY PTC

2023-2024 YEAR IN REVIEW

HOW WE RAISED:

\$97,129+

GALA	\$54,737
DOLPHIN DRIVE	\$30,310
SANTA BREAKFAST	\$5,304
GOLF	\$4,420
SPIRIT WEAR	\$1,327
DINE OUTS	\$606
FALL FESTIVAL	\$425

HOW WE SPENT:

ONE TIME EXPENSES

\$30,479

OUTDOOR SPACES & SCHOOL INVESTMENTS

- BEAUTIFICATION: (OUTDOOR STAGE MURAL, ETC.) - \$17,663
- CLASSROOM PRINTERS - \$5,354
- AUDIO EQUIPMENT FOR EVENTS - \$4,674
- PROJECT GREEN DONATION - \$2,000
- BLACKTOP U.S. MAP - \$788

ADMINISTRATIVE

- PTC EXPENSES - \$5,821
(INSURANCE, SUPPLIES, PRINTING, TAX PREPARATION)

HOSPITALITY

- ROOM PARENT SUPPORT - \$3,356
- TEACHER APPRECIATION - \$3,344
- 5TH GRADE GRAD - \$2,805
- VOLUNTEER APPRECIATION - \$703
- VETERAN'S DAY - \$440
- 1ST DAY OF SCHOOL - \$216

CLASSROOM & LEARNING MATERIALS

- MATH AND READING INTERVENTION SPECIALISTS - \$15,000
- TEACHER SUPPLY STIPENDS - \$13,581
- LAKER LOCKER/CALM DOWN MATERIALS - \$532

SCHOOL/STUDENT PROGRAMS

- ASSEMBLIES - \$9,072
- FIELD TRIP SUPPORT - \$4,929
- ART SUPPLIES - \$1,000
- ENRICHMENT/SCHOLARSHIPS - \$952
- STATE TESTING SUPPORT - \$498
- SCIENCE FAIR - \$356

HOW WE SPENT:

ANNUAL/ RECURRING NEEDS

\$62,605

FREE EVENTS FOR FAMILIES

- COLOR RUN - \$1,848
- MOVIE NIGHT - \$1,809
- NEON BINGO - \$467
- GRANDPARENTS ICE CREAM SOCIAL - \$300
- SANTA RUN - \$152

HOW WE SPENT:

EVENT COSTS

\$4,571

FUNDRAISERS WITH UPFRONT COSTS

- | | |
|--------------------------|----------------------------|
| GALA - \$34,513 | GOLF TOURNAMENT - \$14,357 |
| FALL FESTIVAL - \$8,289. | SANTA BREAKFAST - \$1,669 |

THE TOTALS BELOW THE DASHED LINE ARE NEEDED FOR UPFRONT COSTS, BUT ARE NOT REFLECTED IN THE TOTAL SPENT BECAUSE THE MONEY RAISED IS MORE THAN THE INITIAL COST.

ROLLOVER AMOUNT FOR 24/25 - \$0

Thank you to all our Laker families who donated their time & resources to our programs for the 23/24 school year. Your support makes this all possible.